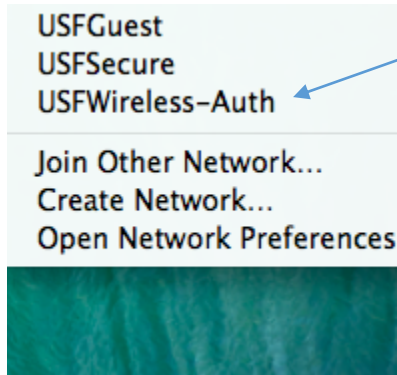


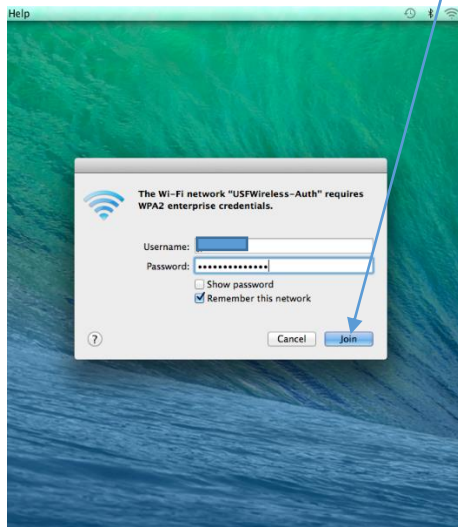


Connecting a mac to University of St.Francis wireless.

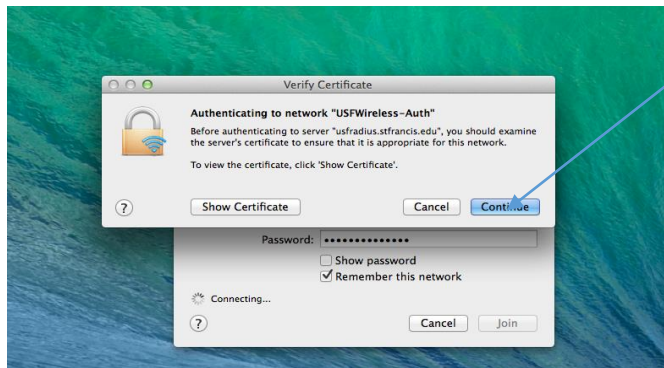
Click wireless icon in upper right corner, select USFWireless-Auth.



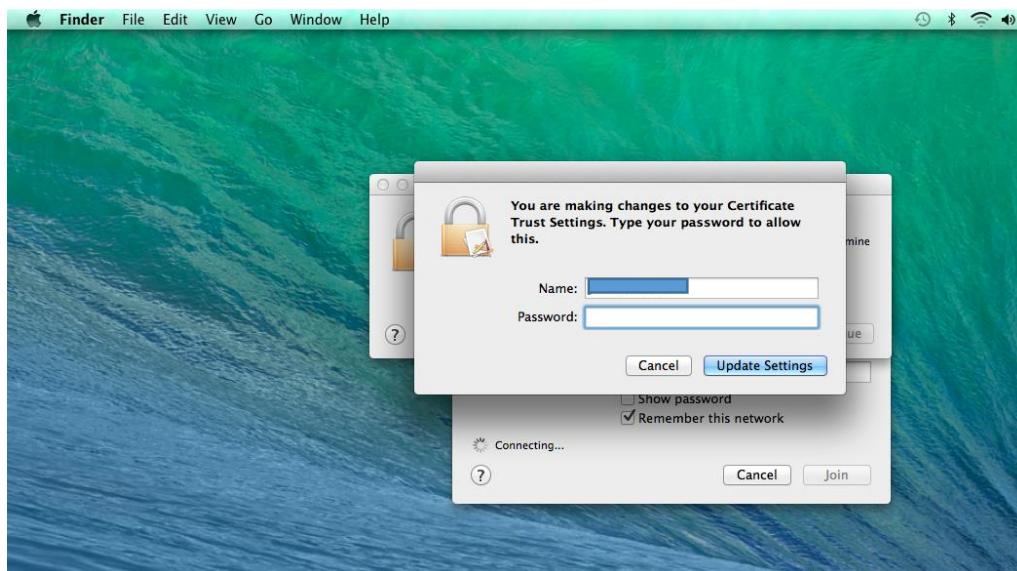
Once you select USFWireless-Auth, a new window will appear and you will be prompted for a login, enter your USF credentials and click join.



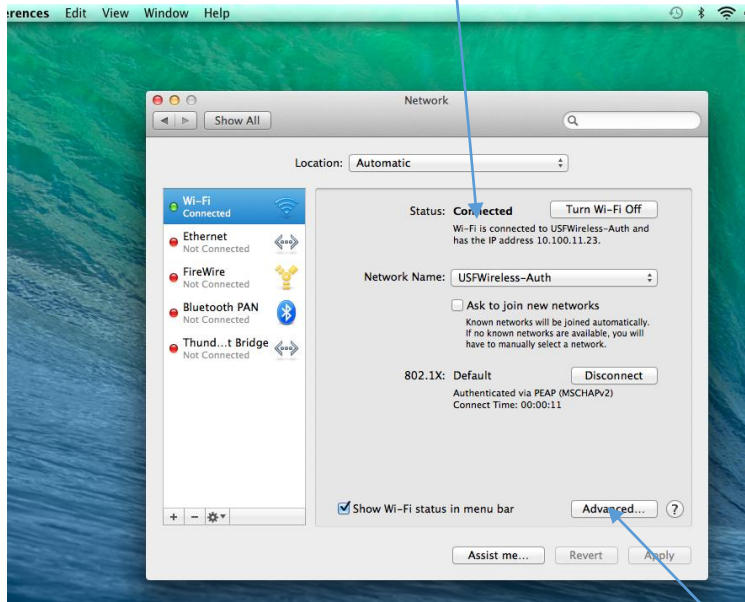
If this is the first time you are connecting, you will receive a message about the security certificate. Ensure the certificate is from usfradius.stfrancis.edu and then click continue.



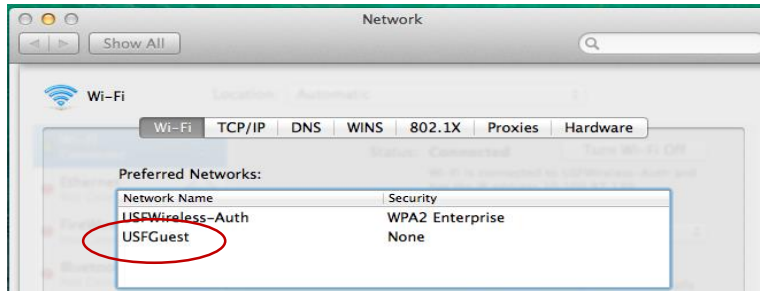
The next window that appears will prompt your for your local computer password. Enter it and click update settings. This will load the connection information into your settings.



Your wifi should then be enabled and connected. Click the wireless icon again and select open network preferences to verify you are connected.



If you were previously connected to USF-Guest, we highly recommend that you remove it from your saved network list. From the network preferences window, click advanced. Locate and remove USF-Guest from your preferred networks. Click ok/apply to close any remaining windows.



If you need further assistance, please contact the USF Tech Support Center at 815-768-TECH (8324) or stop in the TSC office in Marian Hall.

USF Tech Support Center at 815-768-TECH (8324)