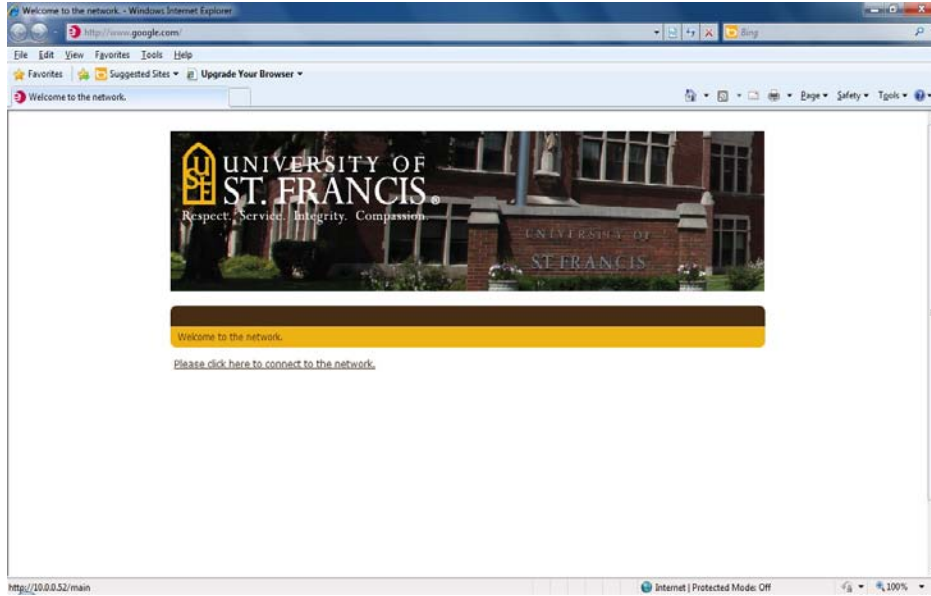
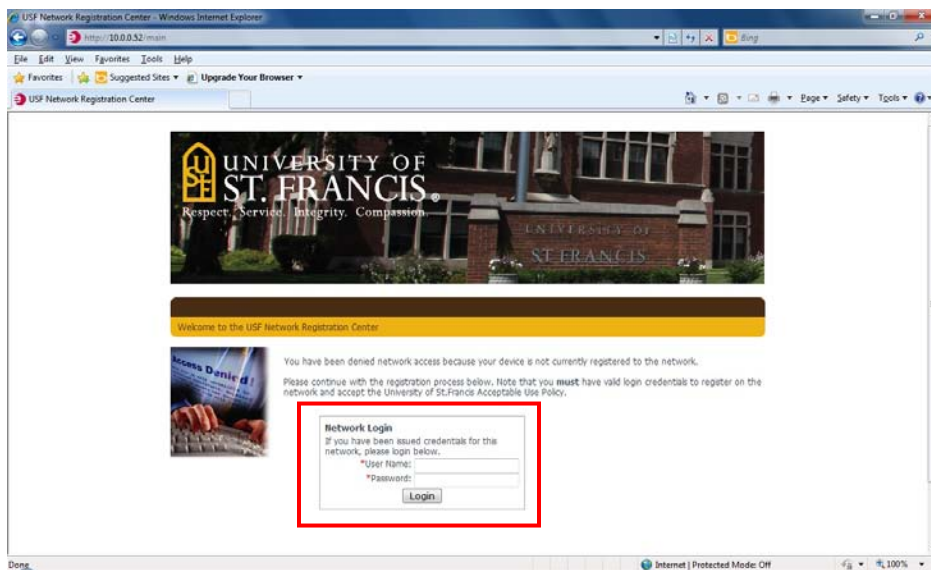


## USF Student Dorm Wired Network Registration

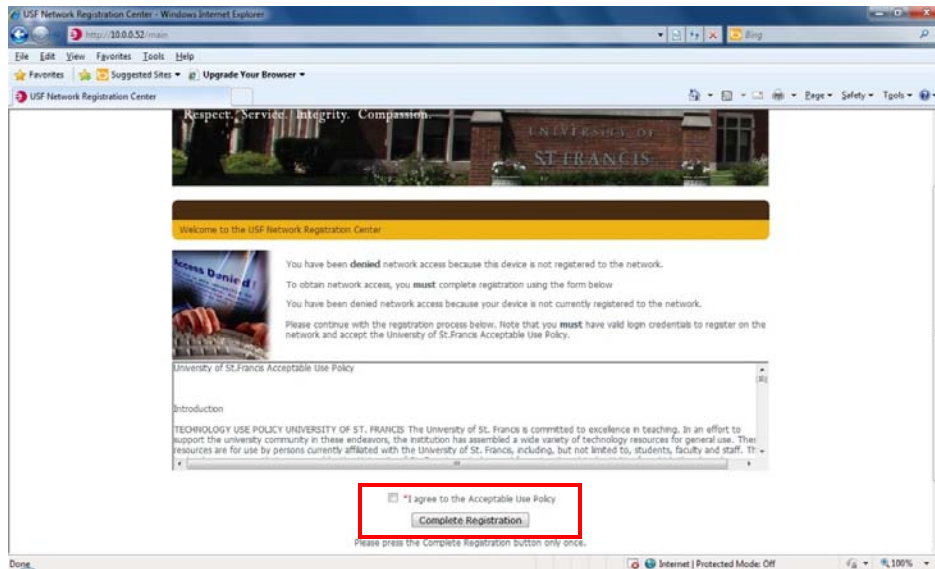
When you plug your computer into a **wired port** you will be required to register it on the network.



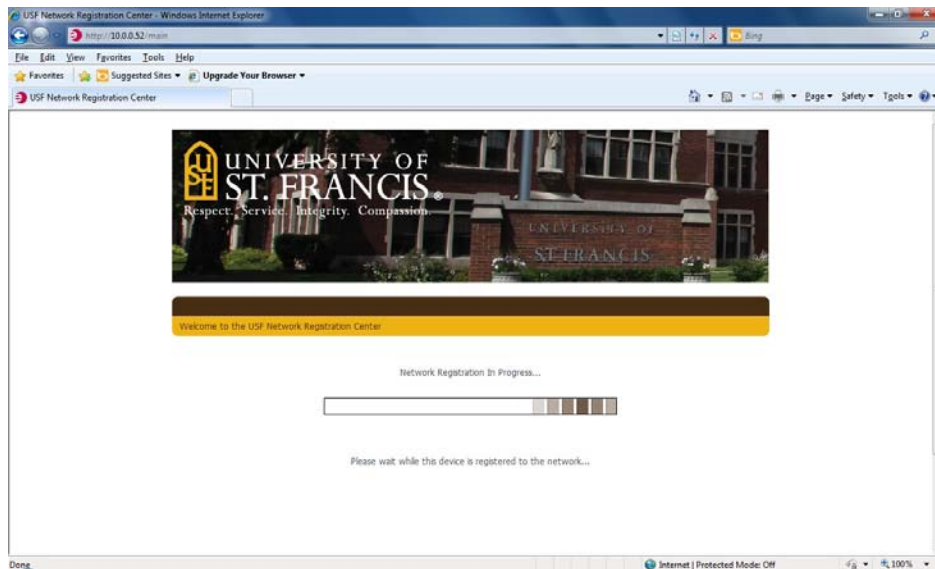
- ▶ Enter your **USF network credentials**. These are the same credentials you use to sign in to a computer in the computer lab or your MYUSF portal.



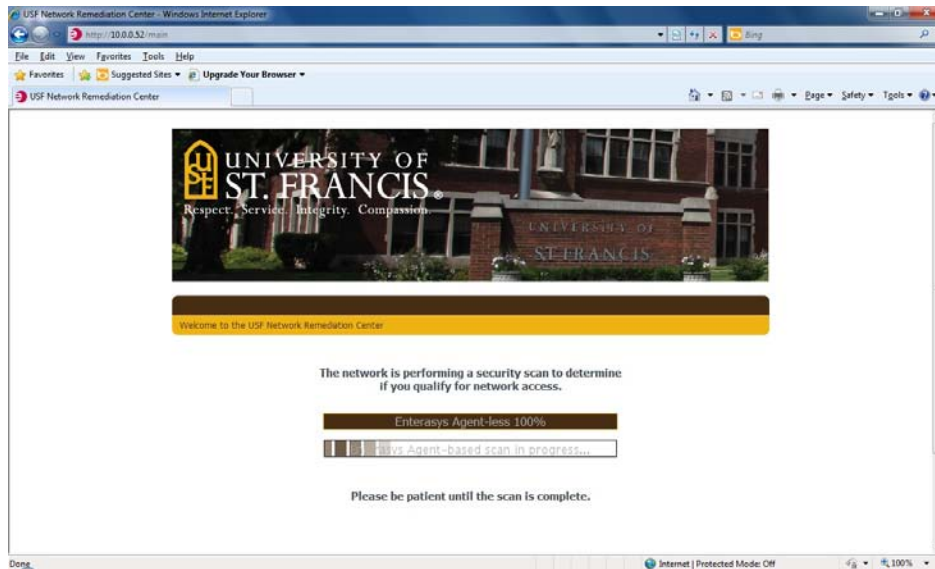
- ▶ Please **read** and **accept** the USF network acceptable use policy.



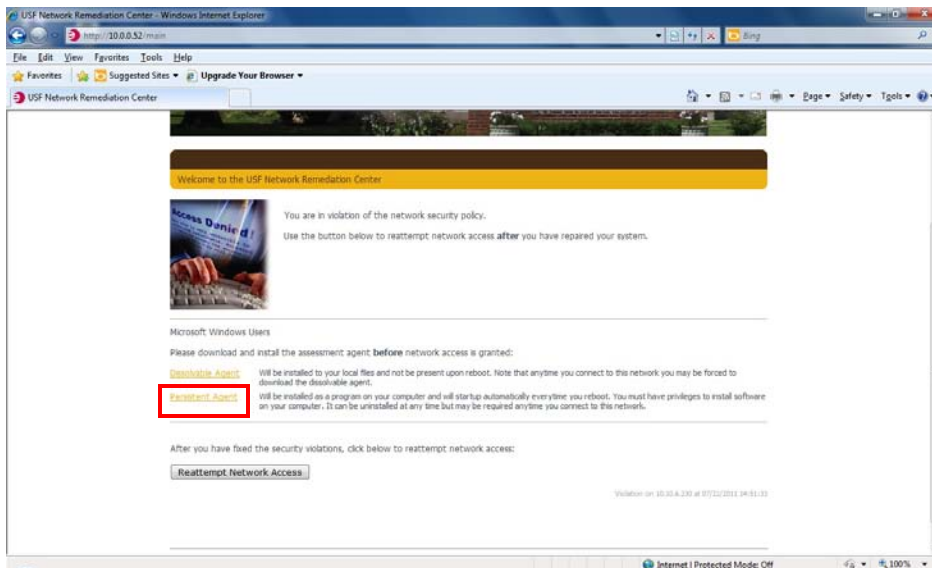
- ▶ Once you enter your network credentials and accept the policy, your computer will be registered.



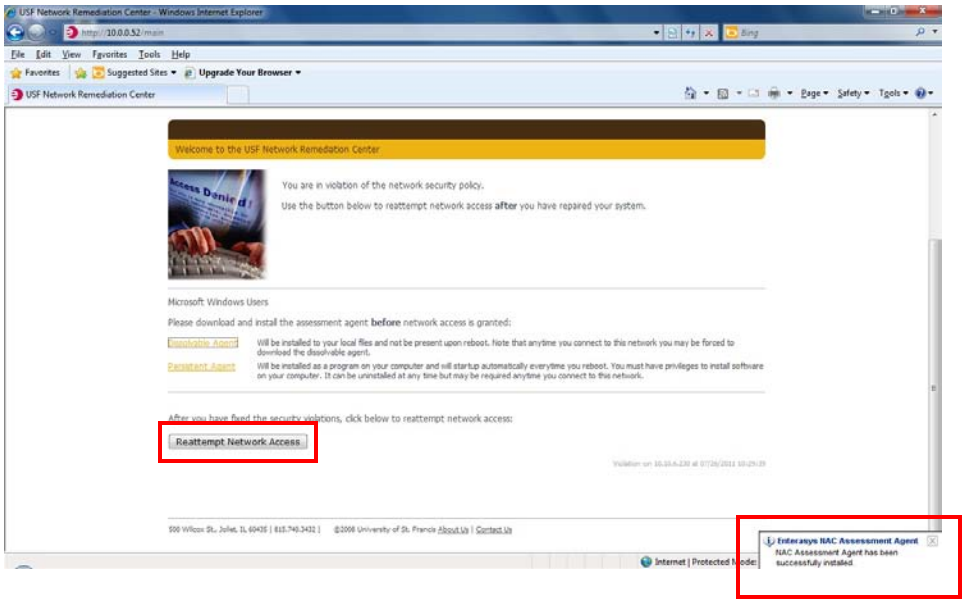
- ▶ After your device is registered, a security scan will be run to ensure your machine is compliant.



- ▶ If this is the first time on the network, you will be prompted to **install the security agent**. There are 2 choices, persistent or dissolvable. The dissolvable agent will be removed automatically after a restart so we suggest students install the **persistent agent**. **Click one of the choices to download and install.**



- ▶ Once agent is installed, a popup will appear notifying you that it has been installed. Click **Reattempt network access** at the bottom of the page.



- ▶ Once the scan finishes and your machine is compliant, you will be directed to the acceptance page. From here you may click the link to obtain network access or wait for the page to redirect to the USF homepage.

